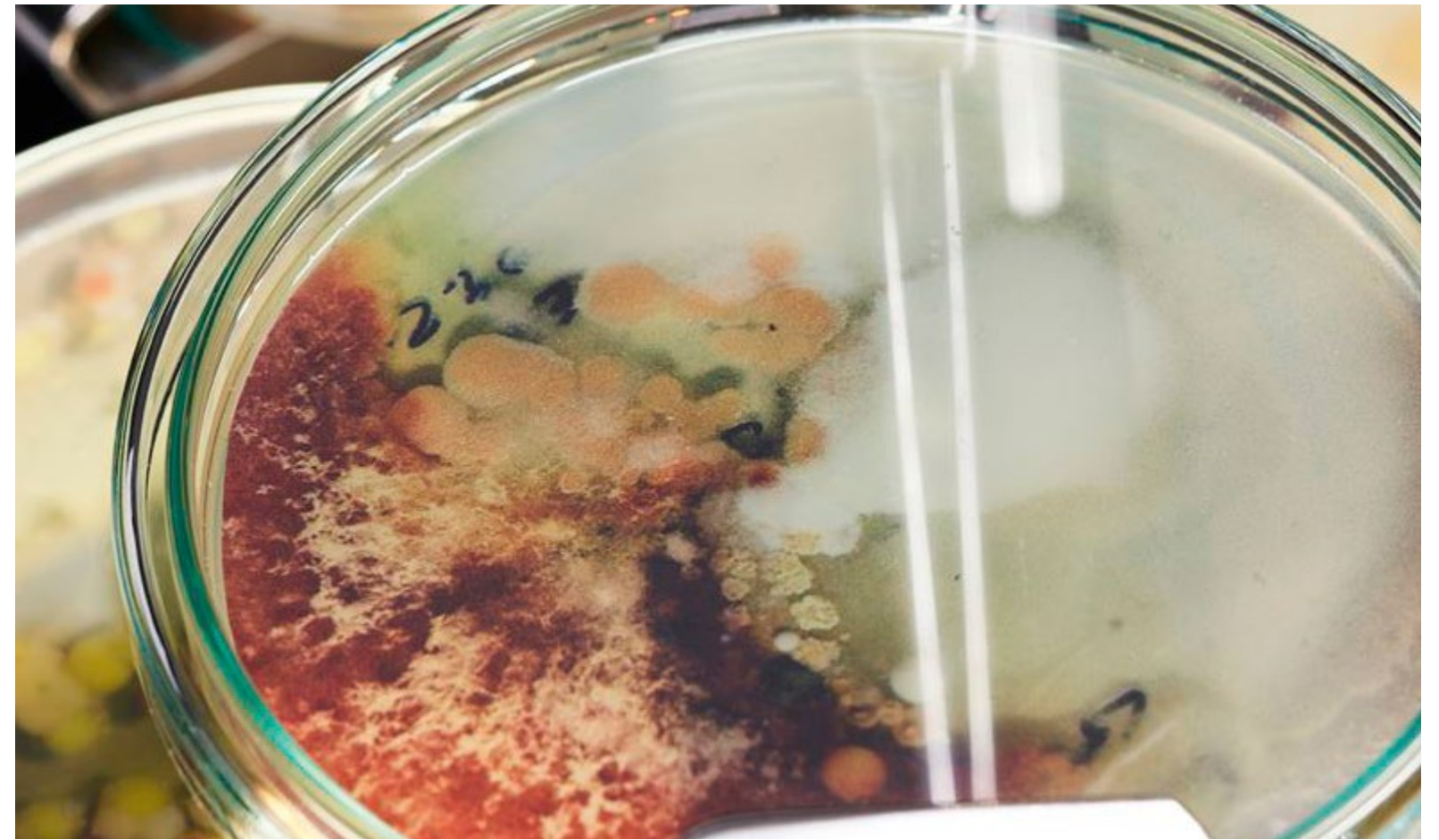


Fault
xquadre

Jess Whatley



- **We're Eco-Collective, a team of six creatives and one project manager. We believe in combining creativity and technology to drive meaningful engagement.**
- **Our approach to projects is collaborative– we listen and work closely with our clients. We have worked with Oxford Natural History Museum for ten years to attract over 100,000 customers annually.**
- **We're qualified to ISO 14001 Environmental Management Standards, which means in our work we embed systemic sustainability with environmental and social integrity.**



1. Superior £75,000 budget

Deliverables include:

- Leaflet
10,000 x trifold leaflet
 - Merchandise
2000 x t-shirt
2000 x tote bag
1000 x pens
1000 x pencils
 - Posters
4x6 sheet billboard poster
 - Wayfinding
3 x regulatory signs
6 x directional signs
6 x identification signs
5 x informational signs
- Website
- 1 x article
 - 1 x banner

THREE PRICING OPTIONS

2. Basic: Lower Budget

All deliverables excluding:

- 2000 x t-shirts
- 2000 tote bags

3. The sky's the limit!

All deliverables plus:

- Laboratory prototypes
- 100% sustainable exhibit
- Discuss ideas you have

The brief:

To support London's sustainable city pledge, the Design Museum is seeking to encourage environmentally friendly behaviours through material design. The aim of the exhibition is to educate visitors on the importance of sustainable materials, and provide insight in to a future without pollution.

Targeted at all ages, the exhibit will combine scientific design with interactive elements. The exhibit will explore using biodegradable materials from various natural sources, alongside using sustainable materials in the exhibit itself.

The Design Museum's budget: £75,000.

Phase 2

We now begin the design process, allocating team members to the deliverables. The theme is established, and samples of the final designs are quality checked.

Conceptual thinking

We will begin allocating the deliverables to team members who specialise in those areas.

Refinement

The theme is established and mock-ups are generated. Sustainable material swatches are developed for the final delivery.

Design and test

This is where the team begin to print and produce full scale samples of the final deliverables to ensure they pass the quality testing stage.

Phase 1

We will meet the client and establish the parameters of phase 1. Rates, budget and brief will be covered, alongside a written contract establishing our agreement.

Consult

Two members of our staff will welcome you to Eco-Collective. Budget will be established, alongside the clients ideal deliverables and timescales.

Challenge

Based on the consultation discussions, our Creative Director will inform our Senior Designer and User Experience Designer of the deliverables. Three business concepts will be executed based on the specified requirements, factoring in budget, staff rates and timescales.

Brief

You will select the brief that best suits your vision for your company. A written contract will be signed, and payments will be scheduled.

Phase 3

All staff meet their deadline for production stage. Deliverables are sent to be produced and final execution of the designs are delivered.*

***Specialists may be required for the delivery.**

Production

All staff will submit their work for the business deadline. Documents are sent off, and we receive final deliverables.

Implementation

This is the final stage where deliverables are displayed. Specialists will be required to ensure our health and safety regulations are met.

Evaluation

We have a written summary of our experience within the team, and always request a RFI/RFP from the client. This is to ensure the client is getting the best experience possible, and we're always looking to improve our processes.

Phase 1

Phase 2

Phase 3

Week 1

Week 2

Week 3

Week 4

Week 5

Week 6

Week 7

Week 8

Week 9

Week 10

Week 11

Creative Director

Project Manager

Senior Designer

User Experience Designer

Middleweight Designer

Creative Artworker

Web Developer

Printers

Sound Specialist

Lighting Specialist

Installation Specialist